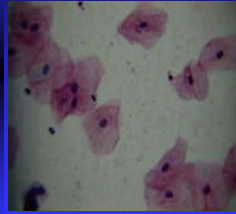


Cells Lab Ch. 7

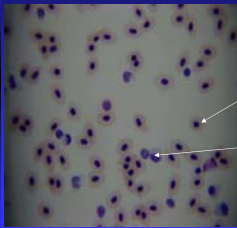
A tour of various eukaryotic and prokaryotic cells

Human Cheek Cell



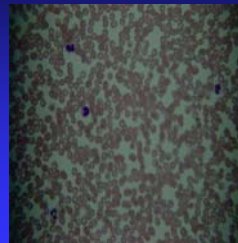
- Squamous cell epithelium
- A human cheek cell
- Eukaryotic
- Obvious nuclei
- Cell Membrane
- Cytoplasm

Frog's Blood



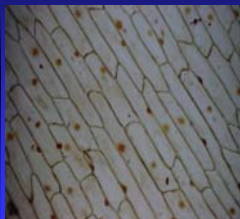
- Both red cells (erythrocytes) & white cells (leukocytes)
- Frog red cells have a nucleus
- White cells are dark purple staining

Human Blood



- Notice human red blood cells have no nucleus
- White cells are purple stained. Notice the difference in the shape of white cell nuclei

Onion Cell 100x



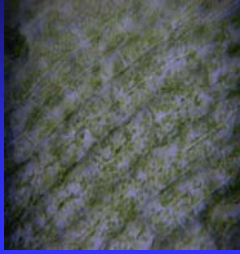
- Notice obvious cell wall
- Notice obvious nucleus
- Plant cells have a cell membrane interior to cell wall (cellulose)

Onion Cell 400x (notice nuclei)



Elodea Wet Mount

- Notice the obvious cell walls
- Notice the green chloroplasts
- Most slides show multiple cell layers

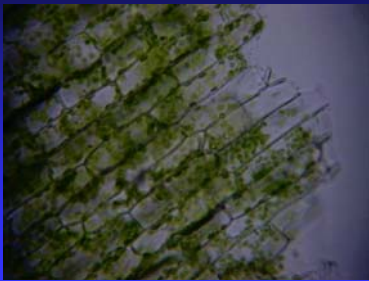


Elodea Wet Mount

- Regular repeating structure/arrangement of plant cell walls



Elodea Wet Mount



Bacteria Slide 400x (gram stain)

- Bacteria are extremely small
- Bacteria are prokaryotes
- Bacteria lack membrane bound organelles & nucleus
- Bacteria multiply rapidly

